

2022 Summer kurz 36 ft



Oil Pattern Distance: 36 Feet **Reverse Brush Drop:** 36 Feet **Oil Per Board:** 45 uL
Forward Oil Total: 15.48 mL **Reverse Oil Total:** 10.125 mL **Volume Oil Total:** 25.605 mL
Forward Boards Crossed: 344 Boards **Reverse Boards Crossed:** 225 Boards **Total Boards Crossed:** 569 Boards

Start	Stop	Loads	Speed	Crossed	Start	End	Feet	T.Oil
1	3L 3R	1	14	35	0.0	0.0	0.0	1575
2	4L 4R	1	14	33	0.0	1.9	1.9	1485
3	5L 5R	2	14	62	1.9	5.8	3.9	2790
4	7L 7R	2	14	54	5.8	9.7	3.9	2430
5	9L 9R	2	14	46	9.7	13.6	3.9	2070
6	10L 10R	3	18	63	13.6	21.2	7.6	2835
7	12L 12R	3	18	51	21.2	28.8	7.6	2295
8	2L 2R	0	22	0	28.8	31.0	2.2	0
9	2L 2R	0	26	0	31.0	36.0	5.0	0

Forward Reverse More

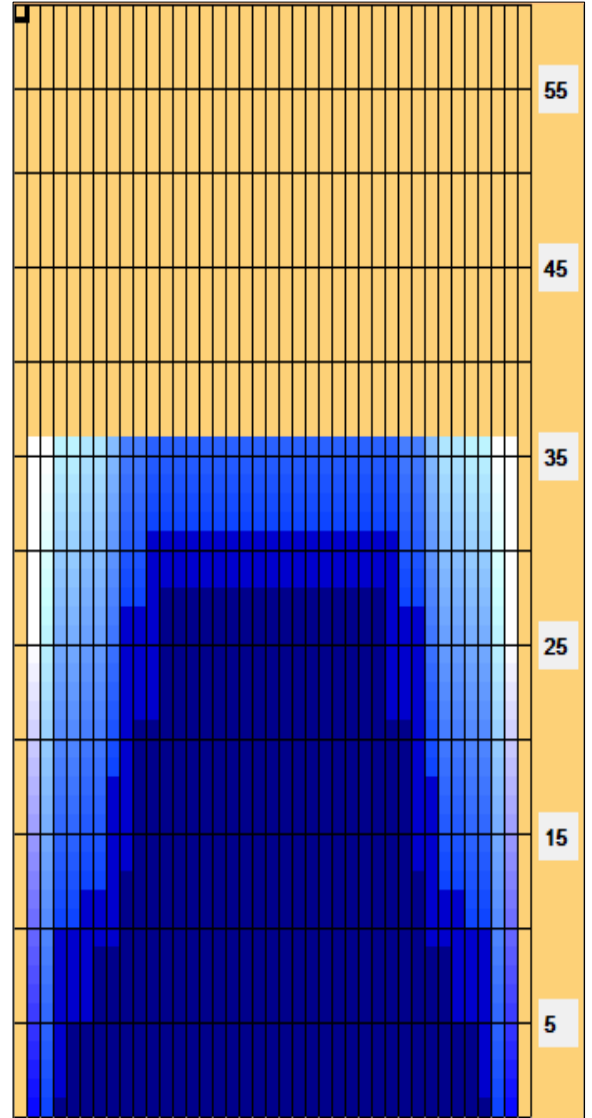
Start	Stop	Loads	Speed	Crossed	Start	End	Feet	T.Oil
1	2L 2R	0	30	0	36.0	31.0	-5.0	0
2	11L 11R	1	26	19	31.0	27.4	-3.6	855
3	9L 9R	3	22	69	27.4	18.1	-9.3	3105
4	8L 8R	3	14	75	18.1	12.2	-5.9	3375
5	6L 6R	1	14	29	12.2	10.3	-1.9	1305
6	4L 4R	1	10	33	10.3	8.9	-1.4	1485
7	2L 2R	0	10	0	8.9	0.0	-8.9	0

Forward Reverse More

Conditioner:
Current

TransferType:
Transfer Brush

- Forward
- Reverse
- Combined
- Buff



Dieses Oelmuster wurde uploaded von Schlitz #27Im Bahnpflege Maschine am 16.04.2021 17:02

Item	3L-7L:18L-18R	8L-12L:18L-18R	13L-17L:18L-18R	18L-18R:17R-13R	18L-18R:12R-8R	18L-18R:7R-3R
Description	Outside Track:Middle	Middle Track:Middle	Inside Track:Middle	Middle: Inside Track	Middle:Middle Track	Middle:Outside Track
Track Zone Ratio	5	1.29	1	1	1.29	5

